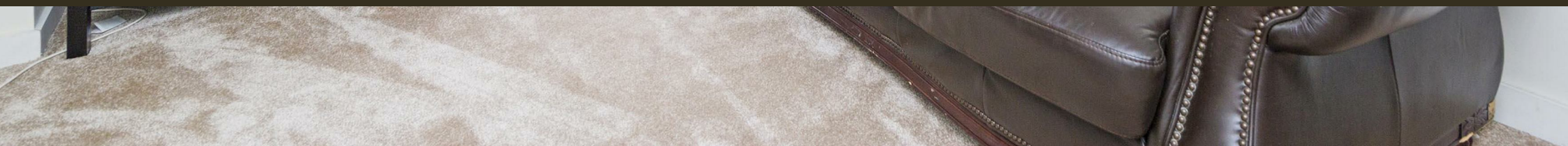




Woods House, 7 Gatliff Road  
London SW1W

GARTONJONES.COM



# Woods House, 7 Gatliff Road London, SW1W

## £600 Per Week

A one DOUBLE BEDROOM furnished apartment for rent of approx. 481sq.ft (44.64sq.m) in Woods House, Grosvenor Waterside. This bright apartment benefits from an OPEN PLAN reception room with a Juliette style balcony, kitchen, bedroom with fitted wardrobes and bathroom. On-site Sainsbury's Local, coffee shop and private kids' club. SLOANE SQUARE and VICTORIA station with access to Gatwick Express trains are within walking distance.

Available via Garton Jones on-site office at Grosvenor Waterside (underneath Bramah House).

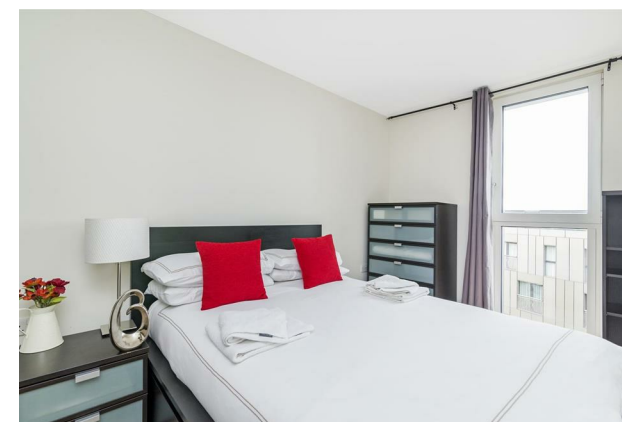
Council Tax: Westminster City Council (band D)  
EPC Rating: C (80)  
5 week deposit.

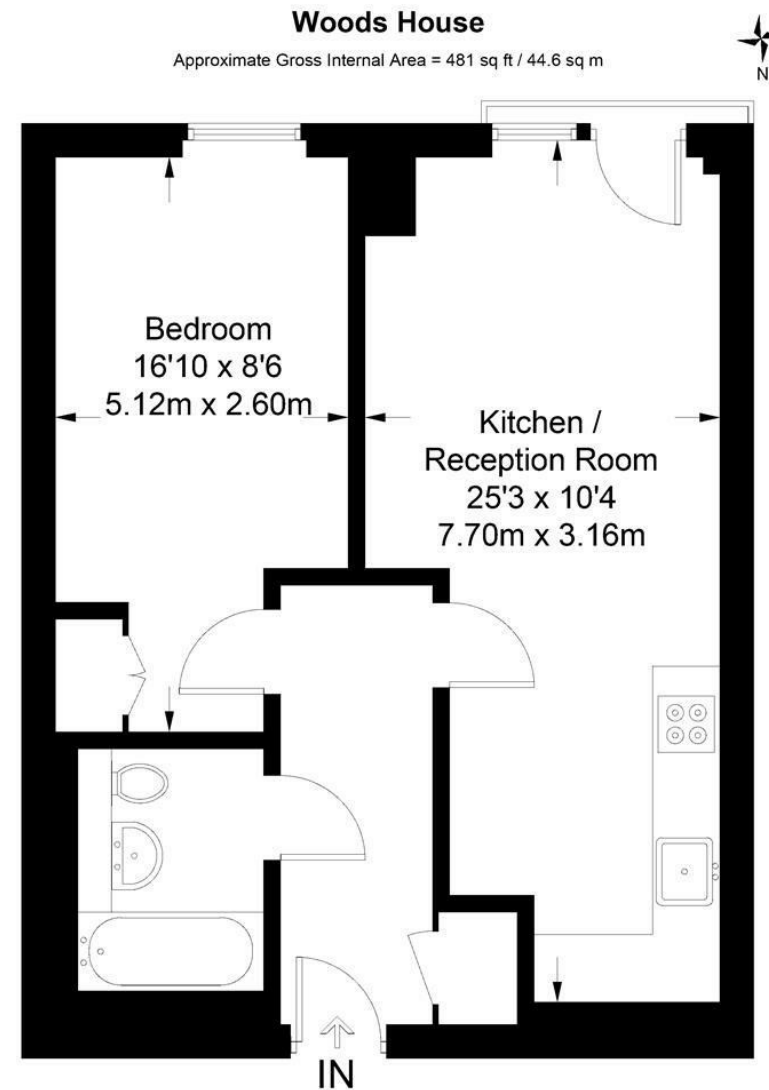
- 481sq.ft (44.64sq.m)
- 1 Double Bedroom
- Open Plan Reception Room
- Smart Fitted Kitchen
- Modern Bathroom
- Juliette Style Balcony
- Furnished
- Leisure Suite with Gym by Separate Negotiation
- On-Site Sainsbury's, Creche, Coffee Shop & Purple Dragon Private Kids Club
- Walking Distance to Sloane Square & Victoria Station

## GARTON JONES.COM

8 Gatliff Road  
Grosvenor  
Waterside  
Chelsea  
London  
SW1W 8DP

Lettings:  
+44 (0) 20 7730 5007  
gws@gartonjones.com  
www.gartonjones.com





Not to scale, for guidance only and must not be relied upon as a statement of fact.  
All measurements and areas are approximate only and have been prepared in  
accordance with the current edition of the RICS Code of Measuring Practice.



